



S. HOWES

SINCE 1856

LUMPBREAKERS

SAMPLE APPLICATIONS

- FILTER CAKE
- FOOD PRODUCTS
- CHEMICALS
- SALT
- FROZEN FOODS
- FERTILIZER
- FLY ASH
- CEMENT



*TESTING & RENTAL
UNITS AVAILABLE*

IN-LINE



STAND-ALONE



CUSTOM



ISO 9001:2015

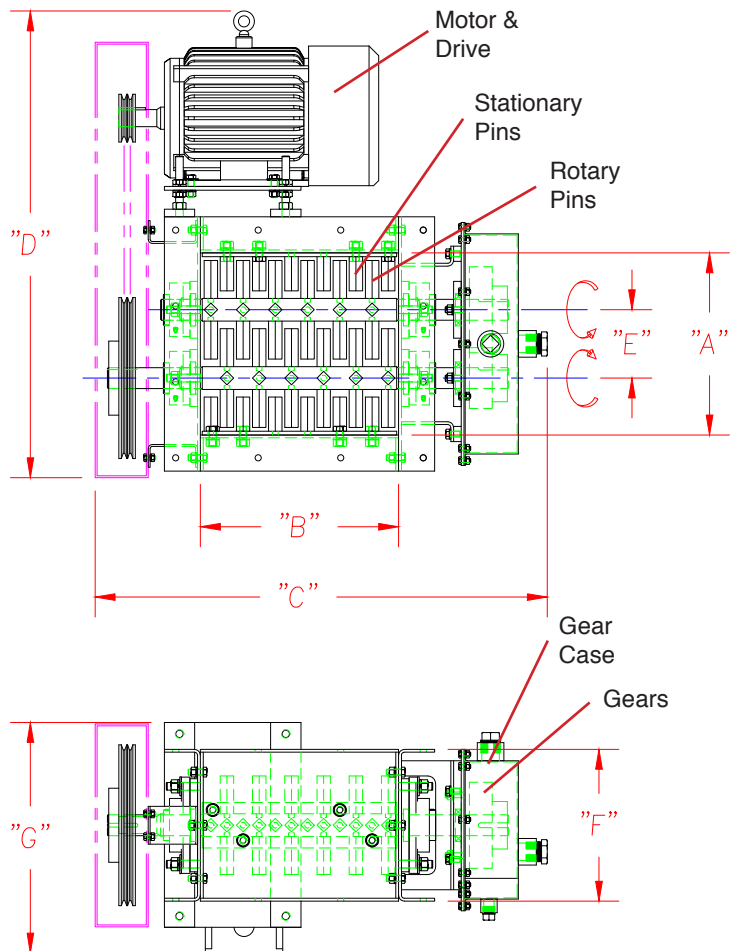


CARRIER
PROCESS
EQUIPMENT
GROUP, INC.

LUMPBREAKERS



LAYOUT

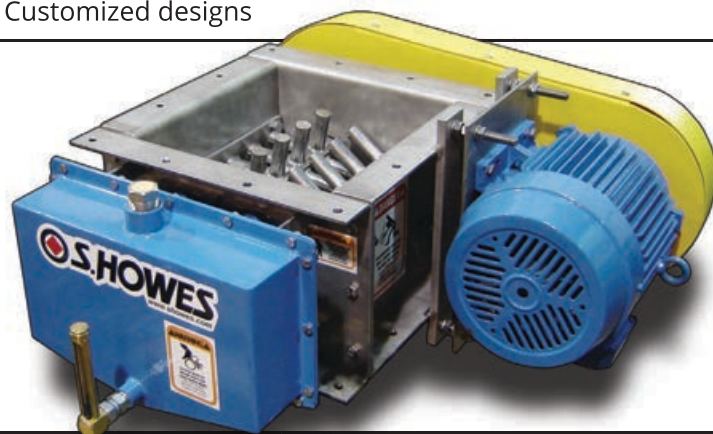


DESCRIPTION

Lumpbreakers are designed to reduce softer and abrasive products such as filter cakes, food stuffs, chemicals, fertilizers and fly ash into sizes that can be further processed. They can be placed in-line to reduce materials into manageable sizes for conveyors and/or other process equipment, or as a stand-alone unit with customized support structures and feed options.

DETAILS AND OPTIONS

- Stainless steel, carbon steel, or other alloys
- Abrasion resistant pin options
- Twin shaft design with stationary and rotary pins
- Flanged inlets and outlets
- Counter rotational drive with steel gears to transmit power between shafts
- Optional tungsten carbide coating on pin leading edges
- Optional dynamic balancing of the shafts
- Power transmission options to suit process needs
- Round pins can be used to reduce product damage
- Explosion proof motor options
- Five standard models
- Customized designs



SPECIFICATIONS*

MODEL	CAPACITY (ft ³ per hr)*	SHAFT RPM	HP	Inside "A" x "B"	Length "C"	Width "D"	Shaft Centers "E"	Height "F"	Height "G"	Approximate Weight (lbs)
12	2,600	354 slow 513 fast	5	12 x 13-1/16	29-3/4	30-3/4	4-1/2	10	15	475
18	4,000	354 slow 513 fast	5	12 x 17-1/2	33-1/4	30-3/4	4-1/2	10	15	525
2024	10,000	350 slow 400 fast	10	20 x 23-3/4	49	42	7-1/2	17-3/4	20	1,200
2036	23,000	350 slow 400 fast	10	20 x 36	62	43-1/2	7-1/2	17-3/4	20	1,500
2048	36,000	350 slow 400 fast	10	20 x 48	73	43-1/2	7-1/2	17-3/4	20	1,800

* Capacities are based on an average of common products. Actual capacities vary widely because they are dependent on the characteristics of the product. All Dimensions are inches.